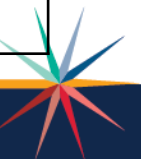


November 8, 2024
KSDE SETS Special Education Administrators' Webinar
Agenda

Agenda Item	Presenter
Welcome	<u>TASN Coordination</u>
<u>KASEA Updates</u>	<u>Lena Kisner</u>
<u>SPEDPro Data Reporting Reminders</u> : Begin Year Set-Up and Initial Submission	<u>Mason Vosburgh</u>
<u>SPEDPro Data Reporting Reminders</u> : End of Year Finalization Implications for SPP/APR Indicators 1, 2, and 4 and Significant Disproportionality	<u>Mason Vosburgh</u>
<u>100 Day Checklist</u>	<u>Doug Tressler</u>
<u>IDEA Fiscal- VI-B LEA Maintenance of Effort and Excess Cost</u>	<u>Dean Zajic</u>
<u>Indicator 6</u> : ListServ Message	<u>Melissa Valenza</u>
<u>Indicator 12</u> : Early Childhood Transition and C to B	<u>Melissa Valenza</u>
<u>Personnel Categorical Aid</u>	<u>Evelyn Alden</u>
<u>WIDA Alternate Access Update</u>	<u>Emily Scott</u>



E-mail Communications

10/16 KASEA membership meeting and awards - Dr. Lena Kisner



Resources

[Schools Nationwide Scramble to Fill Special Ed Vacancies](#)

[What Are We Learning From School Suspension Bans?](#)

[OSEP Seeks Feedback on Individuals with Disabilities Playbook](#)

[Administrator of Special Education Professional Leadership Standards](#)

[College Readiness for Neurodivergent Students](#)

[Zirkel Legal Update](#)

It was great seeing KASEA members at the membership meeting in October. You can find the notes from the meeting [here](#). We are currently accepting nominations for [scholarships](#) and [awards](#). The nominations are due December 3rd. This is a great opportunity to recognize those doing outstanding work.

We are fast approaching the KASEA Winter Conference. We received excellent submissions for the breakout sessions. More information regarding the agenda will be shared as breakout sessions are finalized. Registration will open in early December. Also, mark your calendars for the January 29th membership meeting and social. This is a great time to network and enjoy the camaraderie of other special education leaders.

The KU Center on Developmental Disabilities has [changed their name](#) to the KU Center on Disabilities. This expansion allows them to support all individuals with disabilities. They offer a [certification program](#) designed for employment support professionals and offer training and technical assistance for the [Self-Determined Learning Model of Instruction](#). Look for more information from the KUCCD at upcoming region meetings.

Are you a member of CASE? CASE is offering several free virtual learning events throughout the school year. Two topics include AI in special education and Project Thrive, which is focused on how to support LGBTQ+ youth. Check out the offerings on the [CASE website](#).

KASEA & Friends Calendar

Connecting with KASEA

11/21/24 12:00-1:00

Sped & the Building Leader

Various dates & locations

Tri-State Law Conference

11/7-8/24 in Omaha

Winter Conference

January 30 & 31, 2025

Drury Hotel, Wichita

100 DAY CHECKLIST UPDATE

- MIS

- MIS Manual UPDATE **Tuesday NOV 12 at 10:00am**
 - <https://ksde.zoom.us/j/82423706323>
- DEC 1 COUNT
 - [Which Reports Help Manage My Data](#)

- **NEW DIRECTORS (ADMINISTRATORS) Quarterly #2**

- OPEN to all; designed for NEW SPED ADMIN STAFF
- [Q2 Registration](#)
- **November 21, 2024 from 9:00 am to 4:00 pm**
- Draft agenda available



100 DAY CHECKLIST UPDATE

- MOE and Excess Cost **Nov14-Jan14**
 - Member Districts must submit by **DEC15**
 - MOE and Excess Cost Resources
 - BOTH MOE and Excess cost are in the Kansas Grants Reporting System (KGRS)
- Time and Effort semi-annual certification **DEC**
 - Bi-Annual Certification Instructions
- DLM Justification **DEC 1-22**
 - 1% Threshold FAQ
- ESI Data Due in KIAS **Nov30** for events between JUNE 1 and November 30
 - ESI Resources
- Evaluations
 - Evaluation Timelines
- Private School Consultation
 - NEW PRIVATE SCHOOL CONSULTATION FORM



Indicator 12: C to B Transitions

Indicator 6: Preschool Environments

Special Education Administrators' Webinar

November 8, 2024

Melissa Valenza, Special Education and Title Services
Coordinator, mvalenza@ksde.org

Indicator 12: C to B Transitions

- Smooth, seamless transitions from Part C to Part B ensure young children with disabilities receive services without disruption or delay.
- Part B Indicator 12 is a compliance indicator that measures the percent of children referred by Part C prior to age 3, who are found eligible for Part B, and who have an IEP developed and implemented by their third birthdays. *20 U.S.C. § 1416(a)(3)(B).*



Indicator 12: C to B Transitions

- KSDE is currently working on data verification for Indicator 12.
- Please check areas of potential noncompliance in KIAS to upload any additional documentation.
- Contact Melissa Valenza (mvalenza@ksde.org or 785-296-8092) with questions.



Districts should provide the most inclusive classrooms possible.

The Individuals with Disabilities Education Act (IDEA) requires that to the maximum extent appropriate, children with disabilities, including children in public or private institutions or other care facilities, **are educated with children who are not disabled**, and special classes, separate schooling, or other removal of children with disabilities from the regular educational environment occurs **only** when the nature or severity of the disability of a child is such that education in regular classes with the use of supplementary aids and services cannot be achieved satisfactorily.





Research shows that early childhood inclusion is beneficial both to children with and without disabilities. The beginning years of all children's lives are critical for building the early foundations of learning and wellness needed for success in school and later in life... High-quality inclusion that begins early and continues into school likely produces the strongest outcomes.

Policy Statement on Inclusion of Children with Disabilities in Early Childhood Programs

Indicator 6: Preschool Environments

- This data point measures the extent to which preschool students with IEPs receive the majority of their special education and related services in the least restrictive environment.
- **Look up Indicator 6 data** in the [KSDE SPEDPro authenticated application](#) (Final Indicator 6 report for 2023-2024 and Projected Indicator 6 Report for 2024-2025).
- Contact Amanda Petersen (apetersen@ksde.org) to request individual support in understanding Indicator 6 data and considering opportunities to improve.



KSDE Early Childhood Special Education Part B Contact List

- The updated Part B Contact List for SPP Indicators 6, 7, and 12 is posted on the KSDE Preschool Programming webpage under Early Childhood Special Education.
 - www.ksde.org, Preschool Programming, Early Childhood Special Education
- ❑ Please review the contact list and email updates to Beccy Strohm (bstrohm@ksde.org).



Contact Information



Melissa Valenza
Coordinator
Special Education & Title Services
mvalenza@ksde.org

The Kansas State Department of Education does not discriminate on the basis of race, color, national origin, sex, disability or age in its programs and activities and provides equal access to the Boy Scouts and other designated youth groups. The following person has been designated to handle inquiries regarding the nondiscrimination policies: KSDE General Counsel, Office of General Counsel, KSDE, Landon State Office Building, 900 S.W. Jackson, Suite 102, Topeka, KS 66612, (785) 296-3201.





Personnel Categorical Aid (KGRS)

- No date yet on when Staff ID will be working
 - We will let everyone know when there is a plan.
- Check reports
- ASK QUESTIONS
- PLEASE ask me if no one knows why someone is an error or a discrepancy
- Full year substitutes and ESY approvals will be done before the third payment
 - But ask, and I'll send you my spreadsheet with notes about what will be approved!



Reimbursement Deadlines

- December 2nd – Final day to enter/update before the second payment.

The second payment pays on ALL FTE that is **claimed**.

- February 1st – Final deadline for waivers for FY23
 - Apply as soon as possible!
- March 1st – Final day to enter/update before third payment
 - The third payment pays on **ELIGIBLE** FTE!

Deadlines are in Appendix A of the Reimbursement Guide, in the KIAS calendar, and separately here:

<https://www.ksde.org/Portals/0/SES/funding/CatAid/CatAid-Deadlines.pdf>



Other Reminders

- KSDE license applications.
 - “In process” applications need to be watched closely. The status date is the last time the file had activity. 90 days and the application can be deleted. KSDE licensed staff can apply for renewal 6 months prior to expiration.
 - I can sometimes help a bit with “what’s going on” but teacher licensure can give definite answers.
- Non-KSDE license renewals are important as well. Most can apply at least 45 days prior to expiration.



Authenticated Applications
Problems logging in or
creating/removing accounts:

helpdesk@ksde.org
(785) 296-7935

Categorical Aid
questions/issues:

cataid@ksde.org



Categorical Aid page

<https://www.ksde.org/Default.aspx?tabid=538>

Catastrophic/Non-Public Equivalency

Mason Vosburgh

mvosburgh@ksde.org
(785) 296-4945

Transportation/Medicaid Replacement

Sara Barnes sbarnes@ksde.org
(785) 296-4972

Special Teacher Reimbursement

Evelyn Alden ealden@ksde.org
(785) 296-3868

The Kansas State Department of Education does not discriminate on the basis of race, color, national origin, sex, disability or age in its programs and activities and provides equal access to the Boy Scouts and other designated youth groups. The following person has been designated to handle inquiries regarding the nondiscrimination policies: KSDE General Counsel, Office of General Counsel, KSDE, Landon State Office Building, 900 S.W. Jackson, Suite 102, Topeka, KS 66612, (785) 296-3201.

WIDA Alternate ACCESS Update

Emily Scott

November 8, 2024

Emily Scott

Education Program Consultant

Special Education and Title Services
Team

Title III – ESOL

Email: escott@ksde.org

Phone: 785.296.4941



WIDA Alternate ACCESS English Language Proficiency (ELP) Assessment



WIDA Alternate ACCESS ELP for Students with a Most Significant Cognitive Disability



Student has a home language survey indicating language other than English and DLM eligible



Will take place February 3-March 14, 2025, for students in Kdg-12th grade



Paper format, not computer based



Students must have a most significant cognitive disability, most significant deficits in adaptive behavior, and are an English Language learner



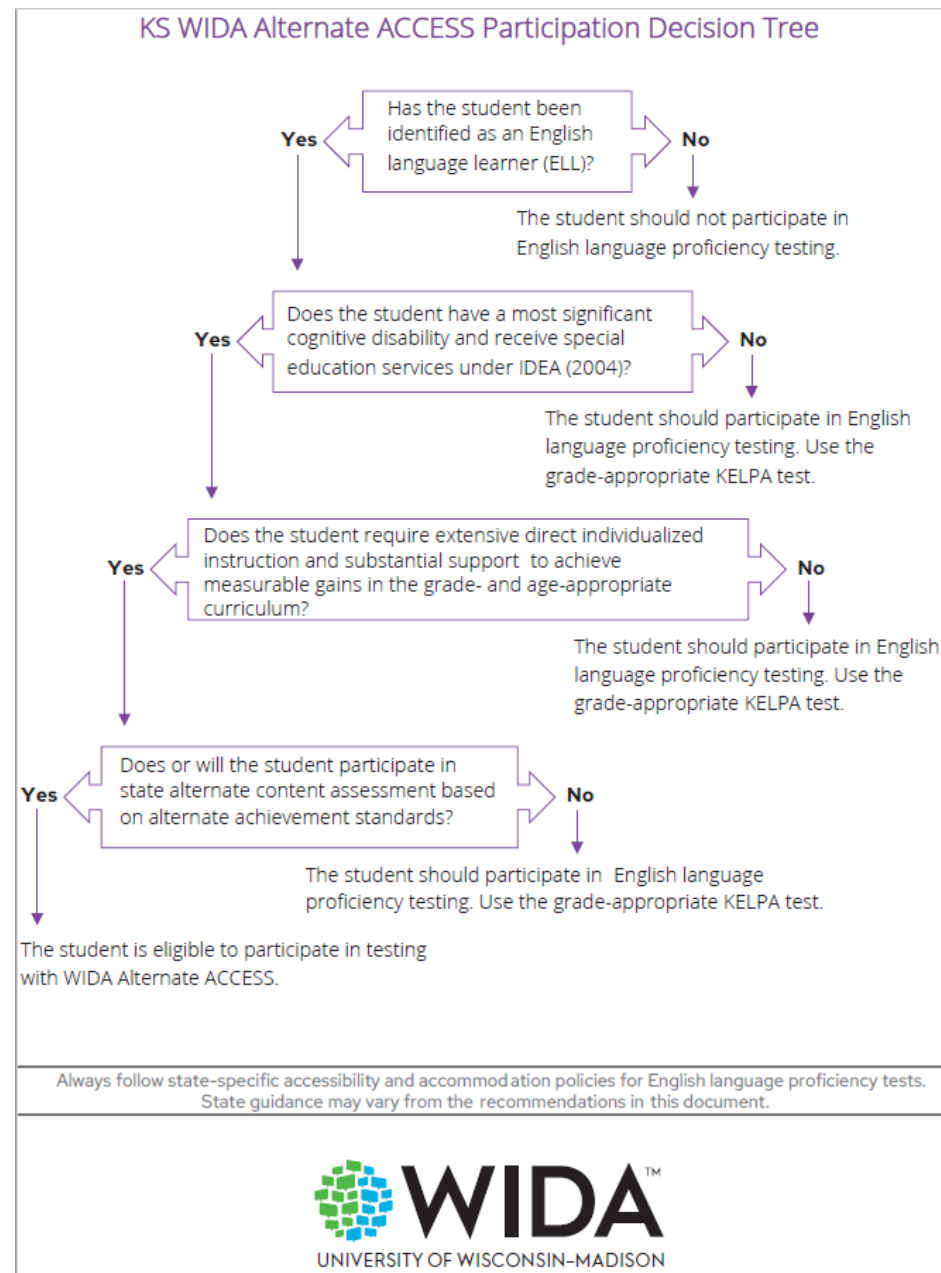
Use the same criteria as DLM and the alt early literacy screener to identify which students need the Alt ACCESS



Tests students' English Proficiency in the four domains: listening, reading, speaking, and writing



KS WIDA Alternate ACCESS Participation Decision Tree



WIDA Alternate ACCESS Score Reports

- Score reports available in DRC Insight/WIDA AMS on September 24th.
- There are two Individual Student Reports (ISR): One for educators and one for families.
- Alternate ACCESS proficiency level scores range from Proficiency Level (PL) 1-5.
- Students with an overall score of 4 or higher are considered proficient and no longer ESOL eligible.
 - Move to transitional #7 in Field D43 in KIDS. Field D44, the Language Instruction Education Program type is > 0. ESOL student, funding continues for 1 year, followed by two years of monitoring.
 - Move to monitored #8 in Field D43 in KIDS. Field D44, the Language Instruction Education Program type is 00. Not an ESOL student, no funding, and monitored for two years.
 - Transitional and monitored students do not take the KELPA or WIDA Alternate ACCESS Assessment.
 - Transitional and Monitoring Sample Forms are located on the Title III State ESOL page: <https://www.ksde.org/Agency/Division-of-Learning-Services/Special-Education-and-Title-Services/Title-Services/Title-III-State-ESOL>



KSDE's State Page on WIDA Website

- [KSDE's state page](#)
- Users can navigate to the page using the Member/State Pages dropdown menu located in the upper right corner of all pages on the [public-facing WIDA website](#).
- Includes testing dates, contact information, the KS WIDA Alternate ACCESS Checklist, along with accordion menus for *State Testing Requirements*, *Test Preparation and Training*, and *Manuals, Guides, and Test Materials*.
- When accessing the link for Kansas specific manuals (*Test Administrator Manual*, *Test Coordinator Manual*, and *Accessibility and Accommodations Manual*), users will be directed to the WIDA Secure Portal to login.



New WIDA Alternate Can Do Descriptors

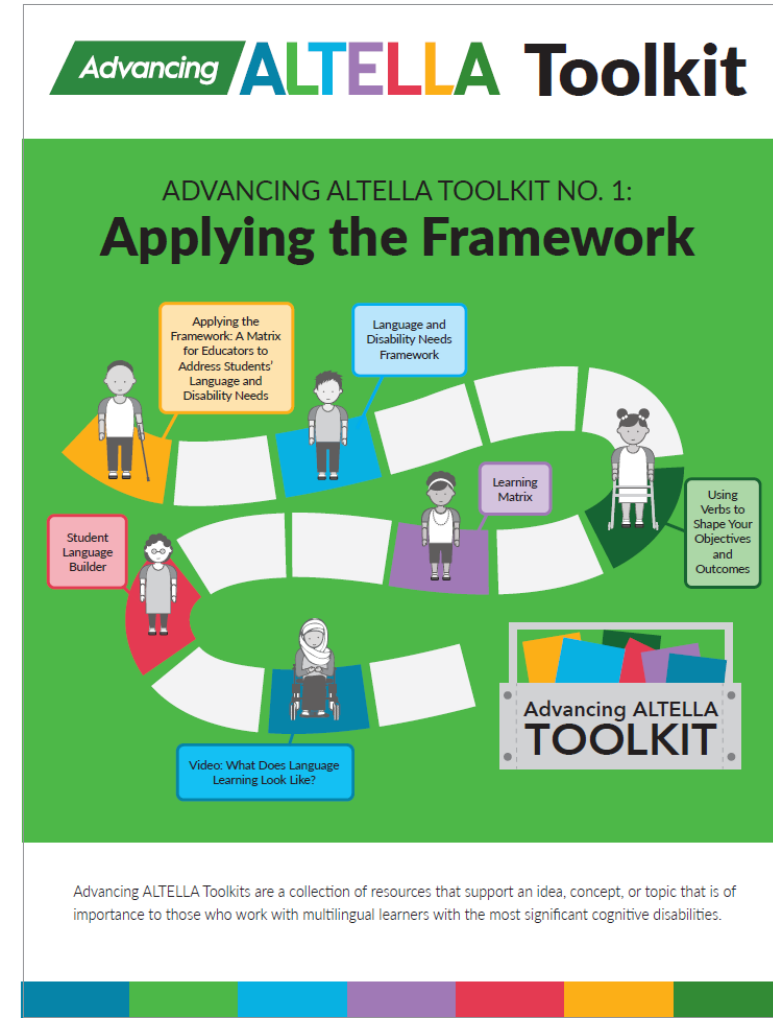
Hot off the WIDA presses! The brand-new **Alternate Can Do Descriptors** are the first-ever Can Do Descriptors for multilingual learners with the most significant cognitive disabilities. They exemplify what students can do with communication and language at various stages of English language development.

Find the Alternate Can Do Descriptors and more information about how to use them on the [Can Do Descriptors](#) webpage.



Advancing ALTELLA Resources

- Advancing ALTELLA Toolkit No. 1: Applying the Framework (PDF)
 - Research Brief
 - Verb List
 - Student Language Builder
 - Matrix
 - Link to the video
- Presentation Slides: Putting the Toolkit into Practice



November WIDA Assessment Webinars

- WIDA Alternate ACCESS for New Test Administrators Tuesday, November 19 at 1:00pm-2:00pm CT
- Learn more and add these upcoming webinars to your calendar on the [Webinars](#) page (login required).
- The recordings for Assessment Webinars are posted to the WIDA Secure Portal on the Webinars page within a week of the presentation. Technology-related webinar links can also be found in [WIDA AMS](#). On the landing page, select **My Applications > General Information > Documents** and filter the Document Type by **Memos/Documents**.



Need Access?

- Contact Chelsea Pelfrey for access to the WIDA Secure Portal or DRC Insight/WIDA AMS.
- Chelsea Pelfrey
Assessment Coordinator
Career, Standards and Assessment Services
(785) 296-0040
cpelfrey@ksde.org
- All other test administration questions?
- Contact Cary Rogers.



Contact Information



Cary Rogers
Education Program Consultant
Special Education and Title Services
(785) 296-0916
crogers@ksde.org

The Kansas State Department of Education does not discriminate on the basis of race, color, national origin, sex, disability or age in its programs and activities and provides equal access to the Boy Scouts and other designated youth groups. The following person has been designated to handle inquiries regarding the nondiscrimination policies: KSDE General Counsel, Office of General Counsel, KSDE, Landon State Office Building, 900 S.W. Jackson, Suite 102, Topeka, KS 66612, (785) 296-3201.



Thank you for Joining us today!!!

Next webinar is scheduled December 6th, 2024

