

# FACT SHEET



## Text-to-Speech Available on the Kansas Assessment Program (KAP)

Text-to-Speech (TTS)	English Language Arts (ELA)	Math	Science
<b>Universal Feature</b>	Not available.	Universal support available to all students.	Universal support available to all students.
<b>Accommodations 1</b>	Grades 6–8, and 10 ELA Questions and Responses.	Not available.	Not available.
<b>Accommodations 2</b>	Grades 3–8, and 10 read all text, including passages. Description of graphics.	Grades 3–8, and 10 all text read. Description of graphics.	Grades 5, 8, and 11 all text read. Description of graphics.

### Universal Feature

**Directions, Math and Science:** The Kansas State Department of Education (KSDE) has moved Math TTS to a universal feature. All students can choose to have a synthetic voice read directions, test questions and answers choices on the math and science assessments.

### Accommodations

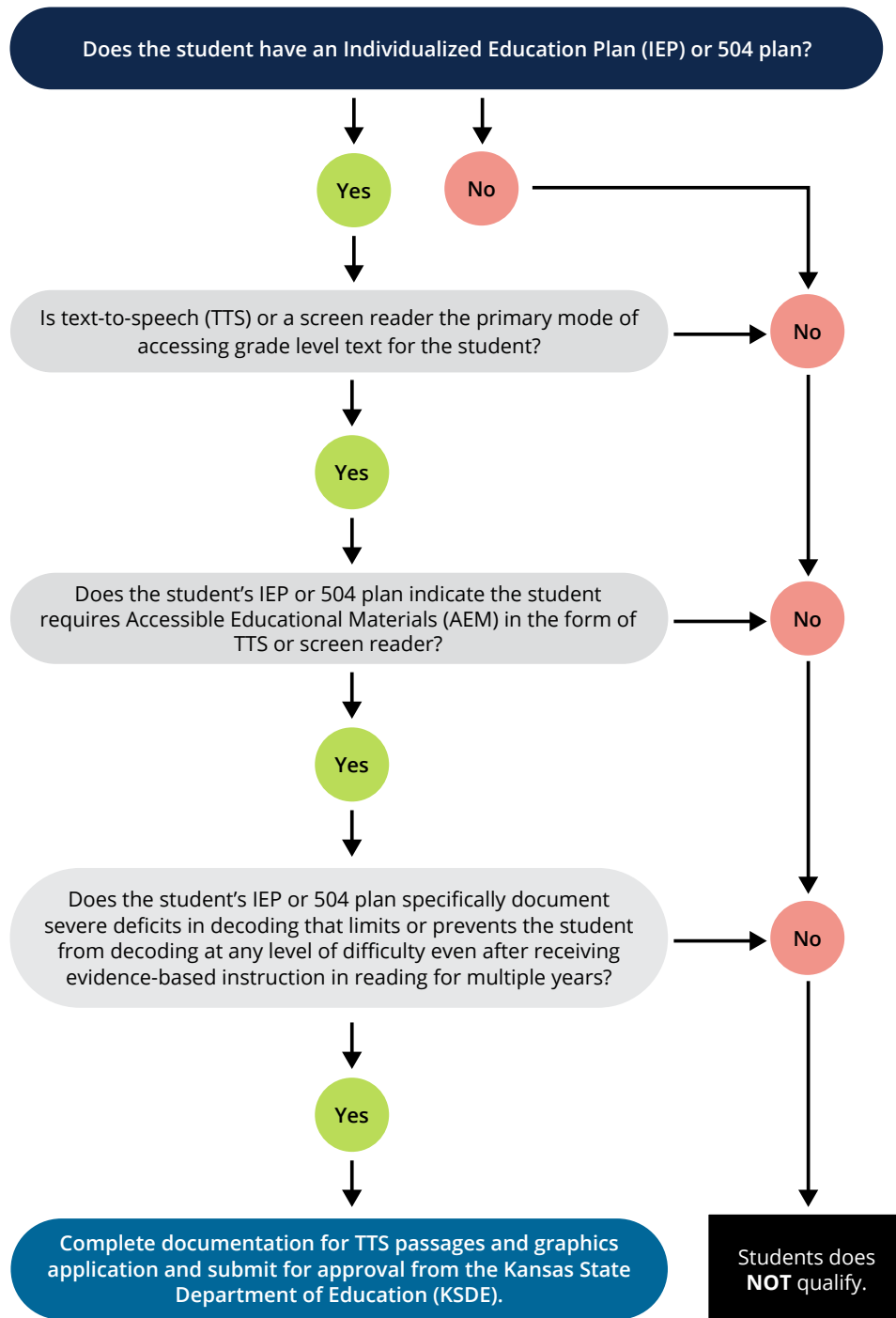
- 1. ELA Questions and Responses for 6–8, and 10 grades only:** Students with Individualized Education Plan (IEP), 504 plan, or English learners who qualify for ESOL services on an Individual Learning Plan (ILP), who need the test items and answer choices for the ELA assessment, a synthetic voice will read test questions and responses. KSDE's expectation is these students have received evidence-based instruction in reading for multiple years. The student must be using TTS or a screen reader as the primary mode of accessing grade level text during instruction and assessment. This accommodation must be selected on student's personal needs profile (PNP).

**Please note:** This accommodation is not intended for students who are just slow readers. The read-aloud accommodation does not refer to an adult reading an occasional word, an occasional distractor, an occasional stem, or an occasional question to the student. However, an adult reading any words in the ELA passage is prohibited. **Students on SIT plans no longer qualify for this accommodation.**

- 2. TTS passages and graphics:** For a very limited number of students with disabilities, TTS of reading passages in ELA may be permitted. A synthetic voice will read the text including ELA passages and detailed description of the graphics. **Students with an IEP or 504 plan who cannot access printed text and require accessible educational materials (AEM) due to their disability may have the Text-to-Speech Application submitted for approval to [ttspassages@ksde.gov](mailto:ttspassages@ksde.gov) by Jan. 31 annually.** This accommodation is appropriate for a student whose IEP/504 Plan explicitly indicates the student's primary mode of accessing printed materials is through text-to-speech or a screen reader.

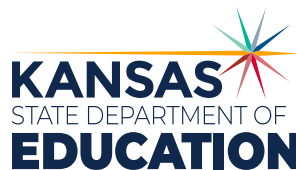
A student who has a specific disability that severely limits or prevents his or her ability to decode text, even after evidence-based instruction in reading for multiple years to teach the student to do so. Students using Job Access With Speech (JAWS®) or NonVisual Desktop Access (NVDA) – the screen reader will navigate the page while the Kite TTS will provide the audio of the page content.

*Kansas leads the world in the success of each student.*



For more information, contact:

**Cary Rogers**  
 Education Program Consultant  
 Special Education and Title Services  
 785-296-0916  
[cary.rogers@ksde.gov](mailto:cary.rogers@ksde.gov)



900 S.W. Jackson Street, Suite 102  
 Topeka, Kansas 66612-1212  
<https://www.ksde.gov>

The Kansas State Department of Education does not discriminate on the basis of race, color, religion, national origin, sex, disability or age in its programs and activities and provides equal access to the Boy Scouts and other designated youth groups. The following person has been designated to handle inquiries regarding the nondiscrimination policies: KSDE General Counsel, Office of General Counsel, KSDE, Landon State Office Building, 900 S.W. Jackson, Suite 102, Topeka, KS 66612, (785) 296-3201.