



# KESA Informational Session



August - September 2025

*Kansas leads the world in the success of each student.*



# Objectives for Today

- Review of KESA 2.0
- 25-26 School Improvement Day
- KESA Implementation Standards
- KESA Graduation Standards
- KESA Compliance





# Kansas leads the **world** in the success of each student





If we strengthen **coherence**  
across Kansas through focusing  
on a **few high-leverage,**  
**fundamental actions,**

then our students will develop  
more knowledge and skills  
leading to greater opportunities  
and fewer limitations.



# Kansas School Improvement Model

## Fundamentals

*(The foundation for school improvement in Kansas Schools)*

### Structured Literacy

We provide literacy instruction in pre-K-12 aligned to the science of reading and assure teachers and admin are well-trained and knowledgeable in the elements and implementation of structured literacy.

### Standards Alignment

We align lessons, instruction, and materials to Kansas standards and clearly identify what students must know and be able to do. This includes interpersonal, intrapersonal, and cognitive skills in pre-K-12.

### Balanced Assessment

We assess students for risk and standards and use data to adjust instruction. We have a deep understanding of the purpose of each assessment and how to use the data to raise achievement.

### Quality Instruction

We have a culture of high expectations in our classrooms and provide each student access to grade level standards and content through high-quality instructional materials.

## Structures

*(Reinforce lead indicators and sustain fundamentals within the system)*

### Resource Allocation

Budget emphasis on implementing high-quality instructional materials (HQIM) and professional development aligned to state standards and structured literacy.

### Educator Evaluation

Educator evaluation processes and conversations account for standards in pre-K-12 and optimizing conditions for learning in classrooms.

### Professional Learning

District professional development and mentoring plans account for the alignment of classroom practice with state standards and HQIM to optimize conditions for learning in classrooms.

### Professional Collaboration

Collaboration system includes grade level and content area teachers aligning instruction with state standards and HQIM to optimize conditions for learning in classrooms.

### Tiered System of Supports

Data analysis and utilization includes screening for risk and performance against standards. Appropriate time is provided for core activities and interventions to meet student needs.

### Family, Community and Business Partnerships

Educators, families, and community partners collaborate to ensure students are progressing on state standards, competencies, and postsecondary readiness indicators.

## Lead Indicators

*(Actions that support implementation of the Fundamentals)*

## Measures of Progress

*(How we know the action is being implemented effectively)*

- Measure
- 6 Month Target
- 1 Year Target

- Measure
- 6 Month Target
- 1 Year Target

- Measure
- 6 Month Target
- 1 Year Target

- Measure
- 6 Month Target
- 1 Year Target

- Measure
- 6 Month Target
- 1 Year Target

- Measure
- 6 Month Target
- 1 Year Target



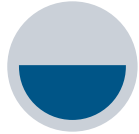


# KESA Roles and Responsibilities



## Systems

Engage in the KESA Collaboration Process, including development and implementation of an action plan.



## KSDE

Coaching, supporting, and evaluating each system, each year in School Improvement, Student Outcomes, and Compliance. Makes a report to the Accreditation Review Council each year.



## ARC

Reviews each system, each year against the KESA Standards. Makes recommendation of accreditation status to the State Board of Education.



## KSBE

Determines accreditation status of each system in KESA.

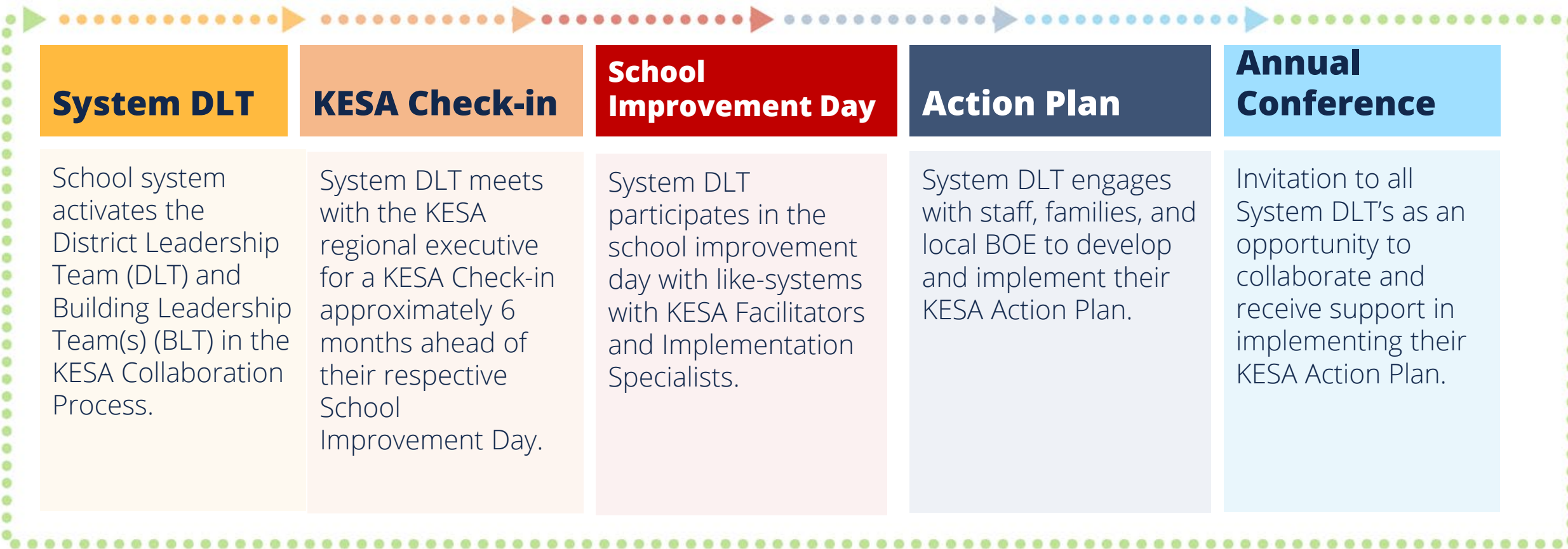






# KESA Collaboration Process

2025-2026





# Review of KESA 2.0





# KESA 2.0 Quiz

# Accreditation Determination Areas



School  
Improvement

Student  
Outcomes

%



Compliance

Each accreditation area has:

- A **set standard** to meet.
- A **measure** to evaluate a school system's performance.
- **Supports to assist systems** in meeting the standard.



# KESA Evaluation Timeline

School Year	Compliance	School Improvement	Outcomes
2024-2025	Report Evaluate	Evaluate • Action Plan	Report
2025-2026	Report Evaluate	Evaluate • Action Plan • Implementation	Report
2026-2027	Report Evaluate	Evaluate • Action Plan • Implementation	Report Evaluate*

\*We will begin evaluating outcomes (**State Assessment scores in ELA & Math, Graduation, Postsecondary**) at the conclusion of the 2026-2027 school year, using the 2026-2027 school year data along with previous years data to evaluate a system's outcomes against the KESA Outcome standards.





# Accreditation Determination Process

## 2026-2027



USD 123	Compliance	School Improvement	Outcomes	USD 123 remains Accredited
Meets the standard	X	X		<b>First Year Not Meeting Standard:</b> 1. System notified. 2. Discussion with Regional Executive about improving outcome. 3. Must indicate how this data will be addressed in the KESA Action Plan.
Does not meet the standard			KESA Graduation Rate	

## 2027-2028

USD 123	Compliance	School Improvement	Outcomes	USD 123 could be Accredited with Conditions or remain Accredited
Meets the standard	X	X		<b>Second Consecutive Year Not Meeting Standard:</b> 1. System notified. 2. ARC conducts an on-site review to determine whether system should be <b>accredited with conditions</b> or remain <b>accredited</b> .
Does not meet the standard			KESA Graduation Rate	



# 2025-2026 School Improvement Day



# Timeline

School Year	Compliance	School Improvement	Outcomes
2024-2025	Report Evaluate	Evaluate • Action Plan	Report
2025-2026	Report Evaluate	Evaluate • Action Plan • Implementation	Report
2026-2027	Report Evaluate	Evaluate • Action Plan • Implementation	Report Evaluate*

\*We will begin evaluating outcomes in 2026-27 school year as we are making an investment in school improvement through implementation of four fundamentals. By delaying evaluation, we will be able to elevate the importance of high-leverage action.





# 25-26 School Improvement Day

- System Report-outs on implementation of KESA Action Plan
- Collaboration on:
  - Data connections
  - Revised Guided Reflective questions
  - Radar graph activity
- DLT's will create and share a rough draft of their next KESA Action Plan





# KESA Implementation Standards

# KESA Action Plan Implementation

Each system will be evaluated using the following standards:

- Standard 1 – Plan (Ready to Implement Action Plan)
- \*Standard 2 – Do
- \*Standard 3 – Study
- \*Standard 4 – Act



\*Shared at School Improvement Day



# Standard 1: Plan



The System develops a **clear, data-informed** action plan that is **aligned** to the School Improvement Model, describing the specific actions to enhance the Fundamentals by building upon coherent actions.



## Standard 2: Do



The System implements the action plan through **clear steps**, monitors progress, identifies barriers and **communicates** with key stakeholders.

# Standard 3: Study



The System **collects, analyzes and applies data** to monitor the implementation and impact of the action plan on professional action.

\*In the future, student data will become part of this standard.



# Standard 4: Act



The System utilizes data to **refine** strategies, **identify** and **sustain** effective practices and **plan** for future actions.



# KESA Graduation Standards

# Timeline

School Year	Compliance	School Improvement	Outcomes
2024-2025	Report Evaluate	Evaluate • Action Plan	Report
2025-2026	Report Evaluate	Evaluate • Action Plan • Implementation	Report
2026-2027	Report Evaluate	Evaluate • Action Plan • Implementation	Report Evaluate*

\*We will begin evaluating outcomes (**State Assessment scores in ELA & Math, Graduation, Postsecondary**) at the conclusion of the 2026-2027 school year, using the 2026-2027 school year data along with previous years data to evaluate a system's outcomes against the KESA Outcome standards.





# Accreditation Determination Process



## 2026-2027

USD 123	Compliance	School Improvement	Outcomes	USD 123 remains Accredited
Meets the standard	X	X		<b>First Year Not Meeting Standard:</b> 1. System notified. 2. Discussion with Regional Executive about improving outcome. 3. Must indicate how this data will be addressed in the KESA Action Plan.
Does not meet the standard			KESA Graduation Rate	

## 2027-2028

USD 123	Compliance	School Improvement	Outcomes	USD 123 could be Accredited with Conditions or remain Accredited
Meets the standard	X	X		<b>Second Consecutive Year Not Meeting Standard:</b> 1. System notified. 2. ARC conducts an on-site review to determine whether system should be <b>accredited with conditions</b> or remain <b>accredited</b> .
Does not meet the standard			KESA Graduation Rate	

# KESA Graduation Rate



- The KESA Graduation Rate is based on the system's 5 most recent graduating classes.
- Calculated by taking the total number of graduates from the 5 most recent graduating classes and dividing by total number of students in the 4-year cohort in each of those classes.

## Ex. – **State KESA Graduation rate**

Graduating classes of 2020, 2021, 2022, 2023, 2024

Total number of graduates – 169,657

Total number in 4-year cohorts – 191,396

State KESA Graduation rate:  $169,657 / 191,396 = \mathbf{88.7\%}$

# Rate of Change

---



- The Rate of Change is the difference between the most **recent** KESA Graduation Rate and the **previous** year's KESA Graduation Rate.
- Calculated by subtracting the most **recent** KESA Graduation Rate with the KESA Graduation Rate from the **previous** year

## Ex. – District A

KESA Graduation Rate (2020-2024) – 96.2% **(Recent)**

KESA Graduation Rate (2019-2023) – 96.5% **(Previous)**

KESA Graduation Rate of Change:  $96.2 - 96.5 = -0.3\%$



KESA Graduation Standards				2020-2024
Performance Category	Additional Description	Criteria	Supports	#/% of Systems
		KESA graduation rate = average of the 5 most recent 4-year graduation cohorts		
Exceeds Performance Expectations	<b>Meets the Standard:</b> Systems that meet or exceed KSDE’s Kansas Can Lead the World! Graduation rate goal	95.0%+ KESA graduation rate (regardless of change from one KESA graduation cohort to the next.)	-No supports required	<b>60 (21.0%)</b>
Meets Performance Expectations	<b>Meets the Standard:</b> Systems that meet KSDE’s performance expectations for KESA graduation rate	A) 88.0-94.9% KESA graduation rate AND KESA graduation rate does not decrease more than 2.0% from one KESA graduation cohort to the next. <b>OR</b> B) Below 88.0% KESA graduation rate AND KESA graduation rate does increase from one KESA graduation cohort to the next	-No supports required	<b>187 (65.4%)</b>  Criterion A: 151 (52.8%)  Criterion B: 36 (12.6%)
Identified Need for Improvement Toward Performance Expectations	<b>Does not Meet the Standard:</b> Systems that do not meet KESA graduation rate expectations	A) 88.0-94.9% KESA graduation rate AND KESA graduation rate does decrease more than 2.0% from one KESA graduation cohort to the next. <b>OR</b> B) Below 88.0% KESA graduation rate AND KESA graduation rate does not increase from one KESA graduation cohort to the next.	<b>First Year Not Meeting Standard:</b> 1. System notified. 2. Discussion with Regional Executive about improving outcome. 3. Must indicate how this data will be addressed in the KESA Action Plan. <b>*Second Consecutive Year Not Meeting Standard:</b> 1. System notified. 2. ARC conducts an on-site review.	<b>39 (13.6%)*</b>  Criterion A: 13 (4.5%)  Criterion B: 26 (9.1%)
			*If these standards were in place now, 23 systems would be receiving an ARC on-site review.	

# Significant numbers

---



- Targets
  - **95%** - State Goal
  - **88%** - The state **KESA** graduation rate has recently ranged between 88-89%.
- Rate of Change from One KESA Graduation Rate to the Next
  - **2%** - Rounded to a whole number from -1.60; the average rate of change for systems whose KESA Graduation Rate decreased between 2023 and 2024

# Example #1

	Total Cohort Size	Total Grads	Year 1	Year 2	Year 3	Year 4	Year 5	KESA Grad Rate	Rate of Change	Category
KESA Grad Rate 2019-2023	113	109	96.3%	95.8%	95.0%	95.8%	100%	96.5%		
KESA Grad Rate 2020-2024	106	102	95.8%	95.0%	95.8%	100%	95.0%	96.2%	-0.3%	Exceeds Performance Expectations  (above 95%, regardless of rate of change)



# Example #2

	Total Cohort Size	Total Grads	Year 1	Year 2	Year 3	Year 4	Year 5	KESA Grad Rate	Rate of Change	Category
KESA Grad Rate 2019-2023	198	157	100%	86.4%	88.5%	74.5%	69.6%	<b>79.3%</b>		
KESA Grad Rate 2020-2024	239	179	86.4%	88.5%	74.5%	69.6%	71.6%	<b>74.9%</b>	<b>-4.4%</b>	<b>Identified Need for Improvement Toward Performance Expectations</b>  (below 88% and negative rate of change)



# Example #3

	Total Cohort Size	Total Grads	Year 1	Year 2	Year 3	Year 4	Year 5	KESA Grad Rate	Rate of Change	Category
KESA Grad Rate 2019-2023	7923	5617	73.2%	69.1%	70.2%	68.8%	73.4%	<b>70.9%</b>		
KESA Grad Rate 2020-2024	8082	5804	69.1%	70.2%	68.8%	73.4%	77.6%	<b>71.8%</b>	<b>0.9%</b>	<b>Meets Performance Expectations</b>  <b>(below 88% but positive rate of change)</b>



# Example #4

	Total Cohort Size	Total Grads	Year 1	Year 2	Year 3	Year 4	Year 5	KESA Grad Rate	Rate of Change	Category
KESA Grad Rate 2019-2023	10248	9114	90.0%	89.7%	88.5%	89.1%	87.4%	<b>88.9%</b>		
KESA Grad Rate 2020-2024	10212	9056	89.7%	88.5%	89.1%	87.4%	88.7%	<b>88.7%</b>	<b>-0.2%</b>	<b>Meets Performance Expectations</b>  (above 88% and rate of change does not exceed 2% decline)



# KESA Graduation Standards - Evaluation Timeline



2026-2027 Evaluation Timeline	
October 2027	Systems submit final report for class of 2027.
January 2028	<p>Each system's yearly Graduation Rate posted publicly.</p> <p>Each system's KESA Graduation Rate (2023-2027) and rate of change (compared to KESA Graduation Rate (2022-2026)) evaluated against the standards.</p> <ul style="list-style-type: none"><li>• Systems notified if they did not meet the standard (Identified Need).</li><li>• Those systems in Identified Need would need to address how they are seeking to improve Graduation rates in their KESA Action Plan.</li></ul>



# Senate Bill 45 Impact

---



- Establishes an alternative calculation for yearly Graduation rate.
- Currently, the federally-defined calculation for Graduation rate has been used in accreditation.
- Depending on how the State Board of Education wishes to proceed, the KESA Graduation Rate calculation will be adjusted.



# KESA Compliance

# 2025-2026 KESA Compliance

- The KESA Compliance Guide is updated and posted to the Accreditation webpage.
- Systems will now be able to track compliance status (In Compliance or Not in Compliance) in the KESA Application.
- Key Dates for Compliance:
  - April 15<sup>th</sup> – System notification of compliance status via email
  - June 1<sup>st</sup> – Systems Compliance status finalized in each area
  - Early June – Final Compliance status report shared with the ARC to inform their recommendations
  - July State BOE meeting – ARC recommendations of accreditation status to SBOE (Receive item)





# Thank You!